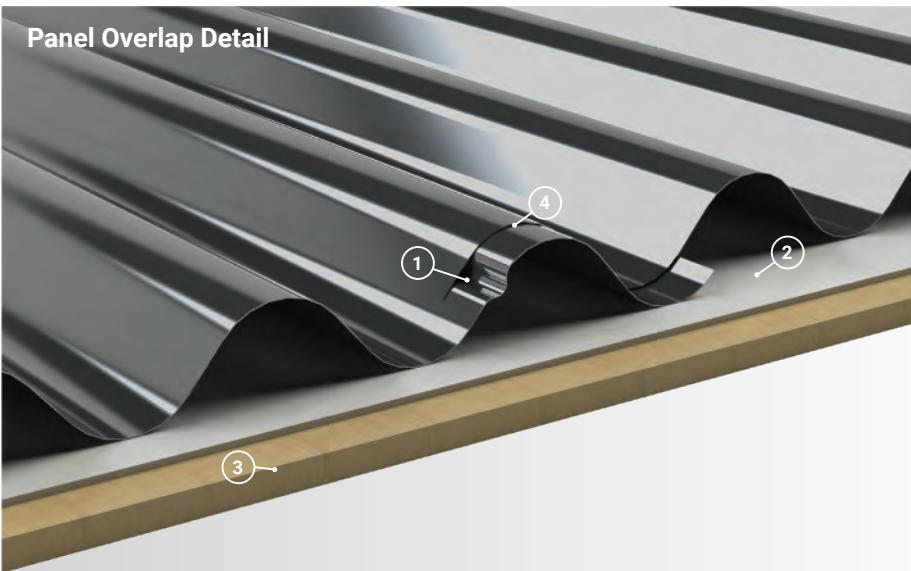


Panel Overlap Detail



1. **Anti-Siphon Groove:** In order to help prevent water from penetrating the overlap, the anti-siphon groove creates an internal air gap at the panel overlap.
2. **Underlayment:** High Temp Ice & Water shown. For use at eaves and valleys.
3. **Substrate:** Plywood substrate material shown. Can be used over open framing with a max span width of 60".
4. **Overlap:** Single Overlap with Anti-Siphon Shown.

Roof Coverage	37"
Wall Coverage	37"
Radius Panel	Yes
Panel Gauges	22*, 24*
Fastener Options	Exposed
Panel Length	3' to 43'+ <small>Longer lengths available. Contact a Product Specialist.</small>
Rib Height	7/8" at 2.67" Centers
Roof Slope	Minimum 1:12 or Greater with Mastic
Impact Rating	UL 2218
Wind Uplift Rating	ASTM 1592
Warranty	Based on Paint System

* Grade 50

Version 5.1, 4/2021



Vented/Non Vented Ridge Cap



Hip Ridge



W Valley



Transition - High to Low



Transition - Low to High



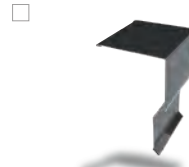
Open Prow Gable



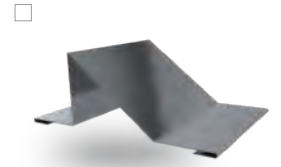
Closed Prow Gable



4" Mini Gable



6" Gable



Snowbreak



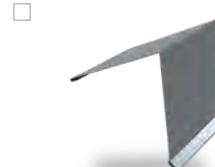
4" Eave



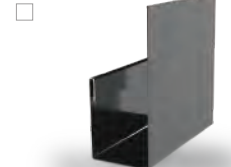
6" Eave



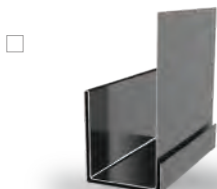
Style D Eave



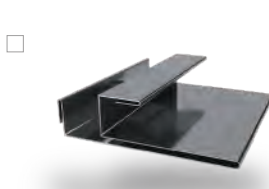
4" Mini Top Cap



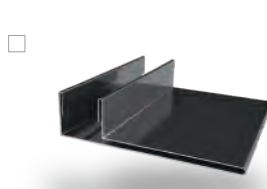
J Trim



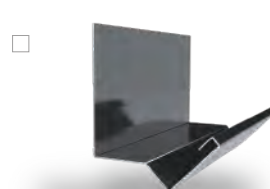
Double J Trim *



F & J Trim



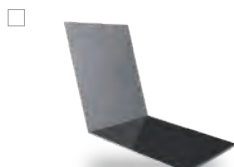
F Trim



Head Trim



Side Wall



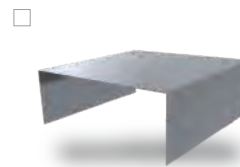
End Wall



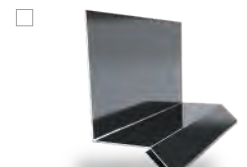
Outside Corner



Inside Corner



Door Cap



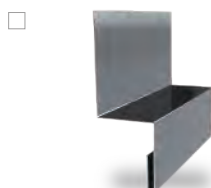
Base Drip



Double Base Drip *



Broom Base



Wainscot



Fascia

Additional Trim Profiles Available By Request

* Color On Both Sides

